

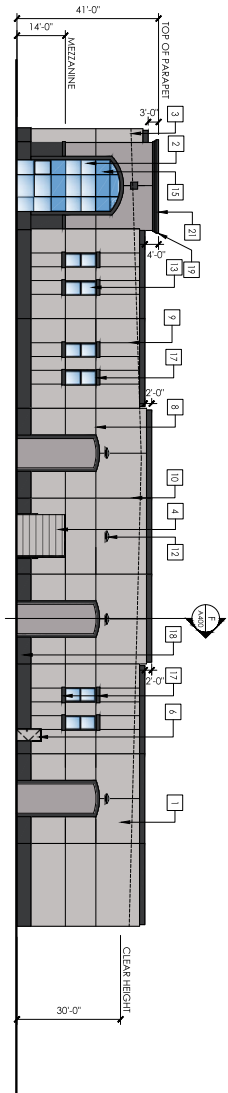
CITY OF SAN DIMAS NOTES:	
1. ALL UTILITIES ON THE SITE SHALL BE INSTALLED UNDERGROUND.	
<b>KEY NOTES:</b>	
1	CONCRETE III-IP WALL

[illegible][illegible]

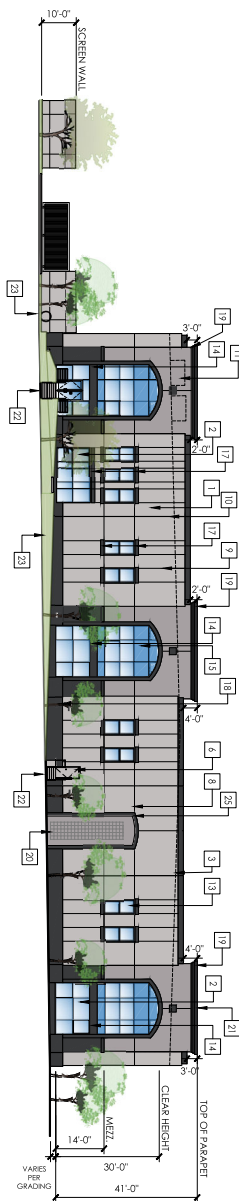


1. CONCRESS ASBESTOS WALL: SEE SPECIFICATIONS FOR CONCRESS, TYPICAL
2. ROOF WALL: HATCHES ROOF WALL & EXTERIOR OF ROW COMPUTER
3. RATCHED WALL: HATCHES RATCHED WALL & EXTERIOR OF ROW COMPUTER
4. ROOF ACCESS LATCH
5. HVAC UNIT COMPARTMENT: SCREENED FROM PUBLIC; 1" AIR SEALATION

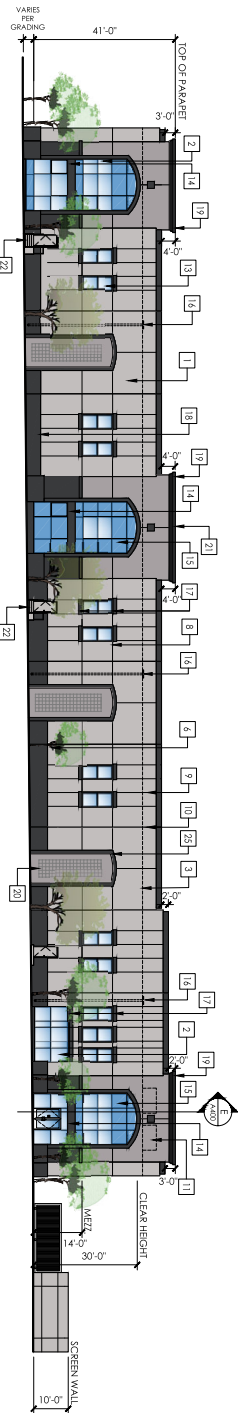
**ALLEN INDUSTRIAL**  
309 W. ALLEN AVENUE, SAN DIMAS, CA - CONCRETE TILT UP WAREHOUSE / OFFICE BUILDING



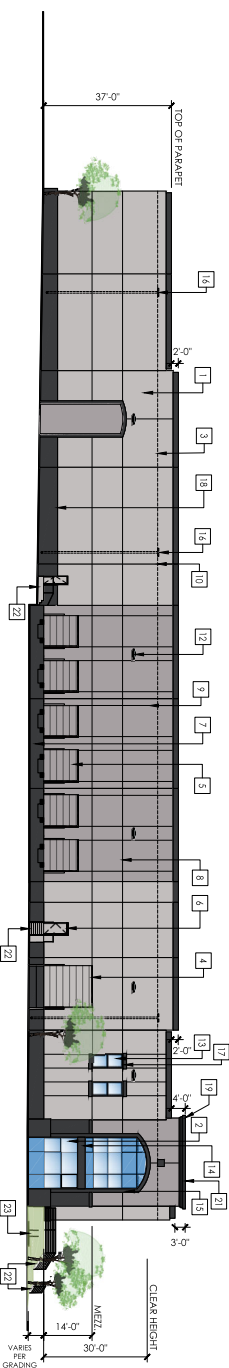
**NORTH ELEVATION**



**SOUTH ELEVATION @ ALLEN AVE.**



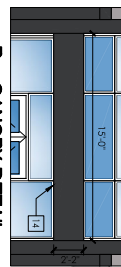
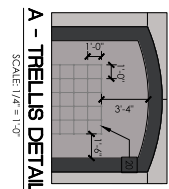
**EAST ELEVATION @ CATARACT ST.**



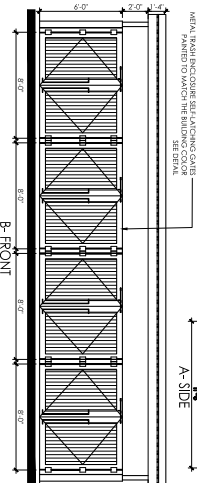
**WEST ELEVATION**

**COLOR SCHEDULE (EXTERIOR COLORS)**

FIELD COLOR	DE4387 Dungeness Reol
ACCENT 1 COLOR	DE4388 Snowy Mountain
ACCENT 2 COLOR	DE4389 Dark Engine
GLAZING	PPG POLAR BLUE LOW-E SOLARBAN 60 (2) DUAL GLAZING
SPANDREL GLAZING	PPG POLAR BLUE LOW-E SOLARBAN 60 W/ BLUE BACKING



**B - CANOPY DETAIL**



**C - TRASH ENCLOSURE ELEVATION**

**KEY NOTES:**

1. CONCRETE TILT-UP WALL - TYPICAL
2. STONEFRONT GLAZING - TYPICAL
3. LINE OF ROOF BEYOND - SHOWN DASHED FOR CLARITY
4. 12" X 14" TRUCK DOOR - GRADE LEVEL - TYPICAL
5. 9'-0" X 10' TRUCK DOOR - DOCK HIGH - TYPICAL
6. 3' X 7' MAIN DOOR PAINTED TO MATCH THE ADJACENT WALL - TYPICAL
7. TRUCK WELL / APRON - PER GRADING PLAN
8. HORIZONTAL REVEAL - TYPICAL
9. VERTICAL REVEAL - TYPICAL
10. PANEL JOINT - TYPICAL
11. FINISHED LOCATION OF MECHANICAL EQUIPMENT - COVERED BY SCREEN FOR VISUAL APPEAL
12. WALL BACK LIGHTING ENTIRE JUNCTION D-SERIES SIZE 2 LED AREA LUMINAIRE - TYPICAL
13. CLEISTORY WINDOW - TYPICAL
14. DECORATIVE STEEL CANOPY TO PROVIDE MIN. 4' OF CLEARANCE TO SCREEN WALL
15. SPANDREL GLASS - TYPICAL
16. PROPOSED LOCATION OF ROOF DRAIN
17. 1" COLOR BAND - TYPICAL - PER DETAIL
18. 4" THICK X 4" HIGH OMEGA CRACK SOLATION SYSTEM BASE MOLDING WITH SMOOTH FINISH COATING - TYPICAL
19. TOWERS SHALL RETURN A MINIMUM OF 10' - TYPICAL
20. JACOBI ROPE SYSTEMS STAINLESS STEEL CABLE TRILLS - 1'-0" SQUARE - TYPICAL
21. DECORATIVE CORNER - TYPICAL
22. EXTERIOR STAIRS WITH 42" HIGH 1" STEEL PIPE GUARD RAIL WHITE GORGE DIFFERENTIAL IS > 30"
23. BICYCLE RACK - SEE SITE PLAN
24. CONCRETE WALKWAY - MAX < 5% SLOPE
25. 1'-0" COLOR BAND - TYPICAL - PER DETAIL







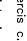
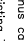
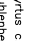
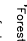
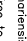
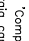

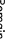
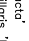


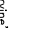
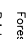
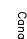
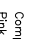
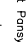
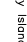
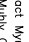

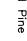
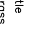
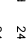


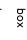
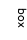
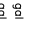
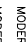

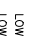
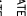
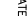



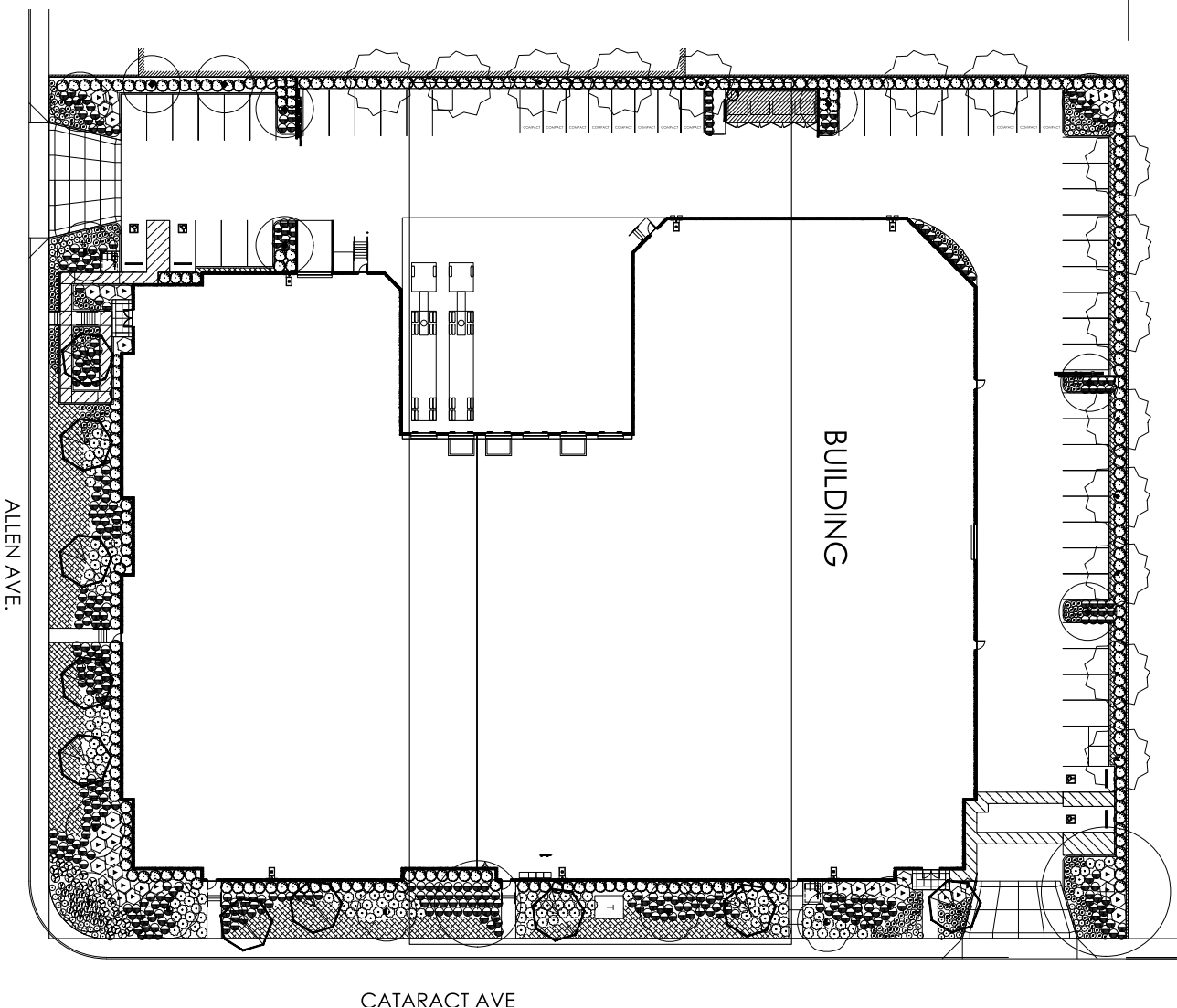






SYMBOL	BOTANICAL NAME	COMMON NAME	SIZE	FACTOR
--------	----------------	-------------	------	--------

TREES		SHRUBS		GROUNDCOVER		PROSTRATE MOPOURUM	
	<i>Cercis</i> c. "Forest Pansy"		Myrtus c. "Compacta"		Compact Myrtle	5 gal	LOW
	<i>Tsatania confertifolia</i>		Muhlenbergia capillaris "Inyne"		Pink Muriel Grass	1 gal	LOW
	<i>Gaifura parvifolia</i>		Olea europaea "Korinta"		Little Olive	1 gal	LOW
	<i>Pinus confertensis</i>		Callistemon "Little John"		Dwarf Bottlebrush	5 gal	LOW
	Existing Tree to Remain		Westringia frutescens		Coastal Rosemary	5 gal	LOW
TREES		SHRUBS		GROUNDCOVER		PROSTRATE MOPOURUM	
	Agave "Blue Glow"				Blue Glow Agave	5 gal	LOW
	Aloe striata				Coral Aloe	1 gal	LOW
	Danielle t. "Varegata"				Varegated Flox Lily	1 gal	LOW
							
							
							
							
							

[illegible]

All improvements are to be maintained by the property owner.

NOTE:  
ALL PROPOSED LANDSCAPE AREAS WILL  
BE IRRIGATED WITH AN AUTOMATIC  
IRRIGATION CONTROLLER SYSTEM

